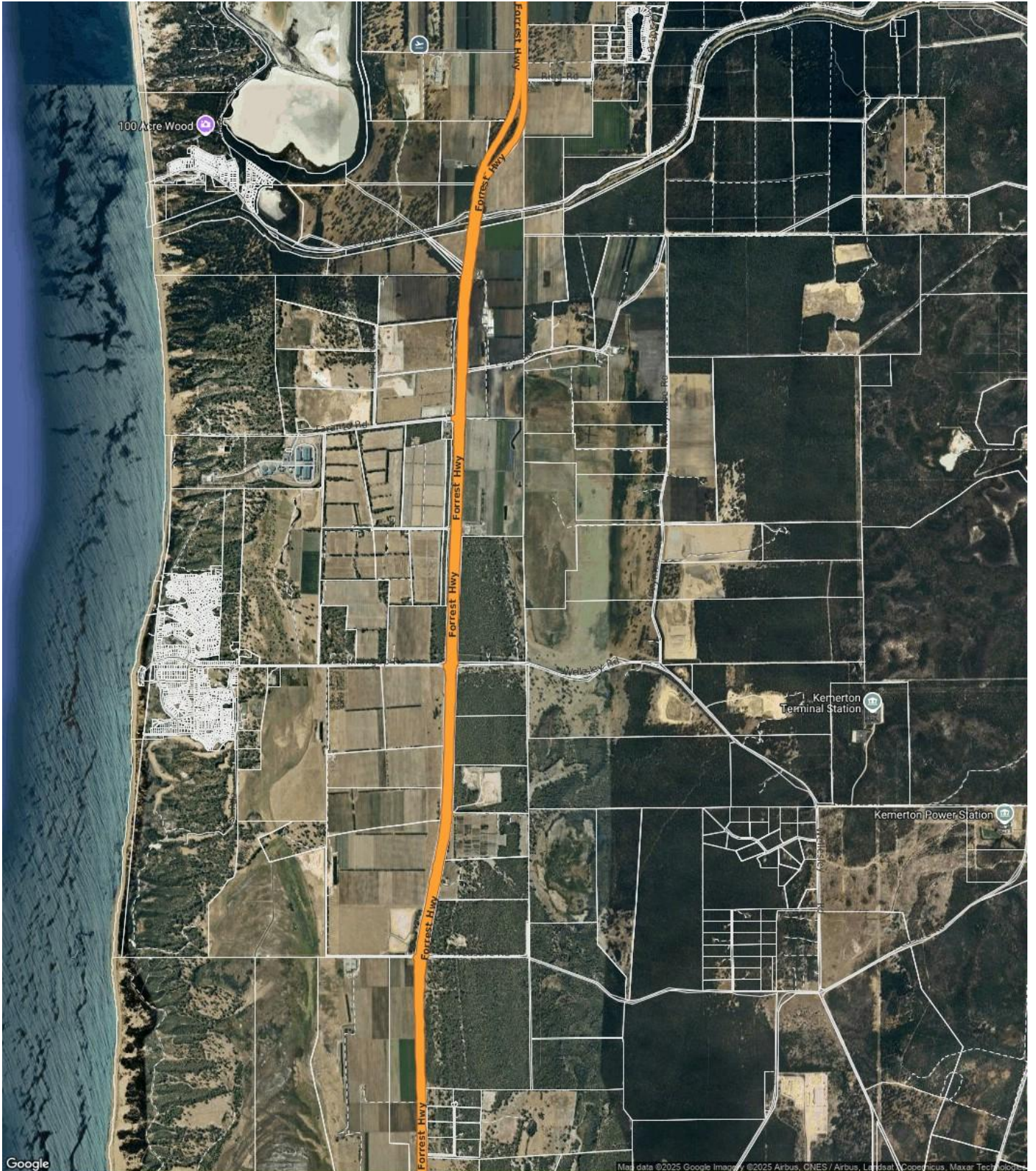


## **SUBURB FLYOVER REPORT**

BINNINGUP (UNIT)

PREPARED BY: JACOB MAGUIRE , HARCOURTS APG, PH: 0409957516

## BINNINGUP - Suburb Map



Prepared on 07/07/2025 by Jacob Maguire , 0409957516 at Harcourts APG. © Property Data Solutions Pty Ltd 2025 (pricefinder.com.au)

The materials are provided as an information source only. © Information contained within this Product includes location information data licensed from Western Australian Land Information Authority trading as Landgate (Landgate). Copyright in the location information data remains with Landgate. Landgate does not warrant the accuracy or completeness of the location information data or its suitability for any particular purpose.

## BINNINGUP - Sales Statistics (Units)

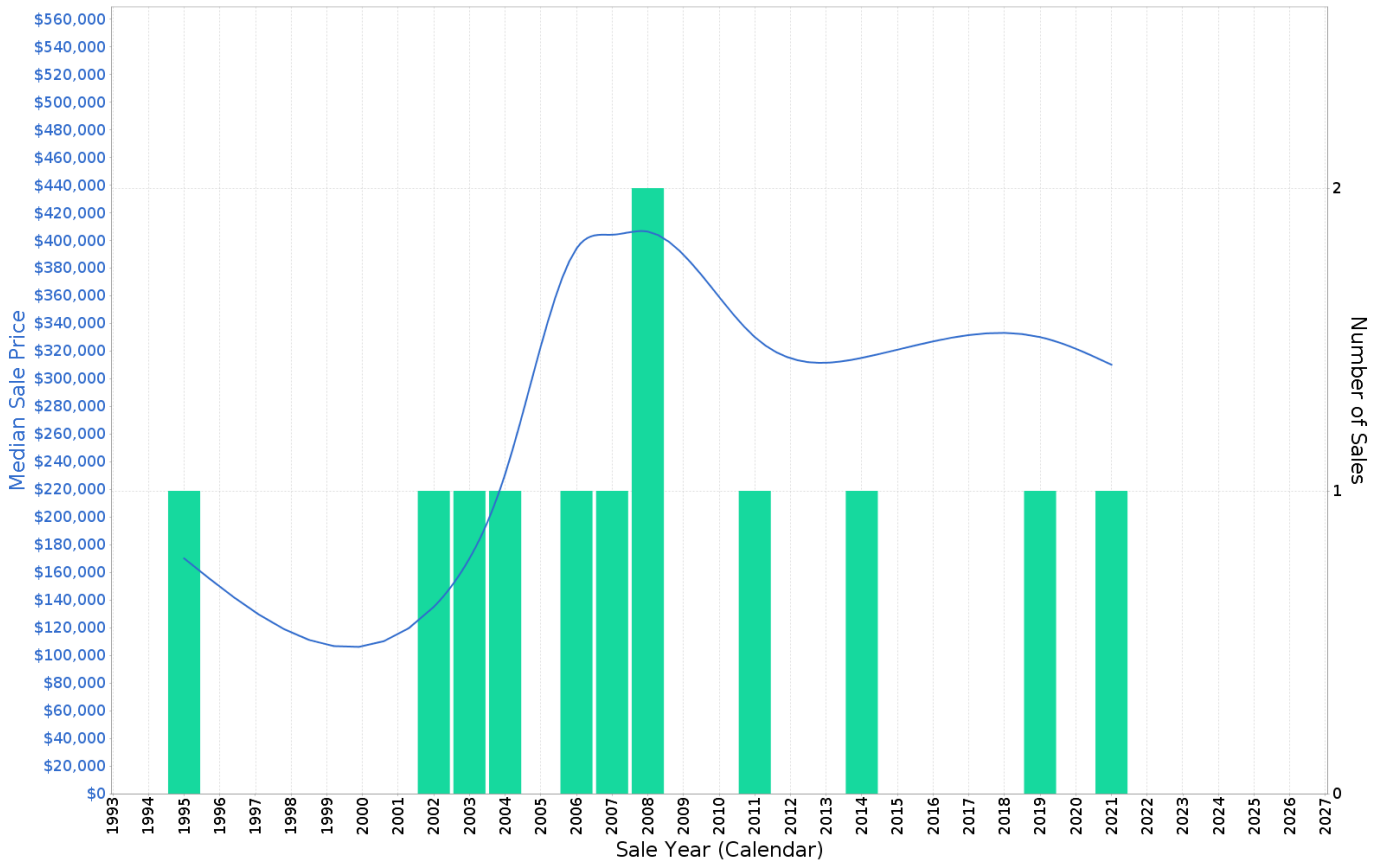
Year	# Sales	Median	Growth	Low	High
2007	1	\$ 404,000	0.0 %	\$ 404,000	\$ 404,000
2008	2	\$ 406,250	0.6 %	\$ 402,500	\$ 410,000
2009	0				
2010	0				
2011	1	\$ 330,000		\$ 330,000	\$ 330,000
2012	0				
2013	0				
2014	1	\$ 315,000	0.0 %	\$ 315,000	\$ 315,000
2015	0				
2016	0				
2017	0				
2018	0				
2019	1	\$ 330,000		\$ 330,000	\$ 330,000
2020	0				
2021	1	\$ 310,000		\$ 310,000	\$ 310,000
2022	0				
2023	0				
2024	0				
2025	0				

Median Sale Price

N/A

Suburb Growth

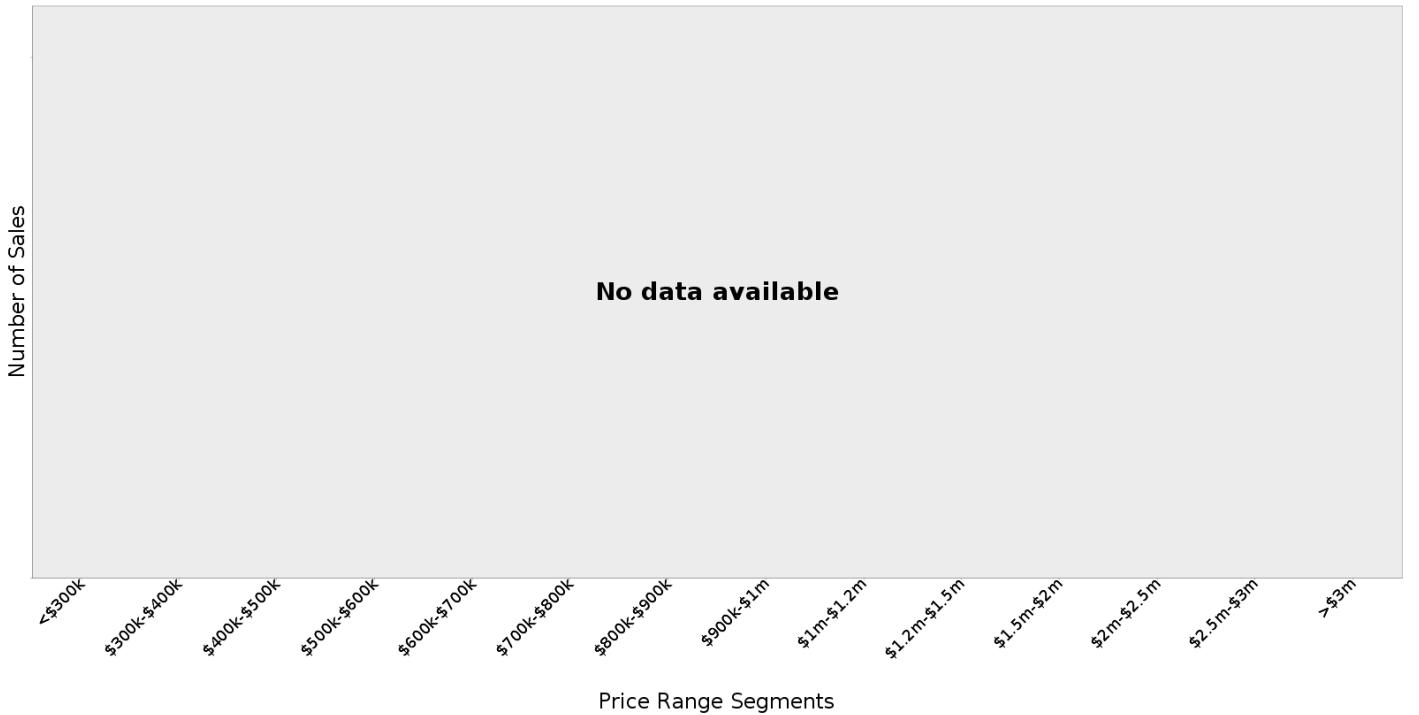
N/A



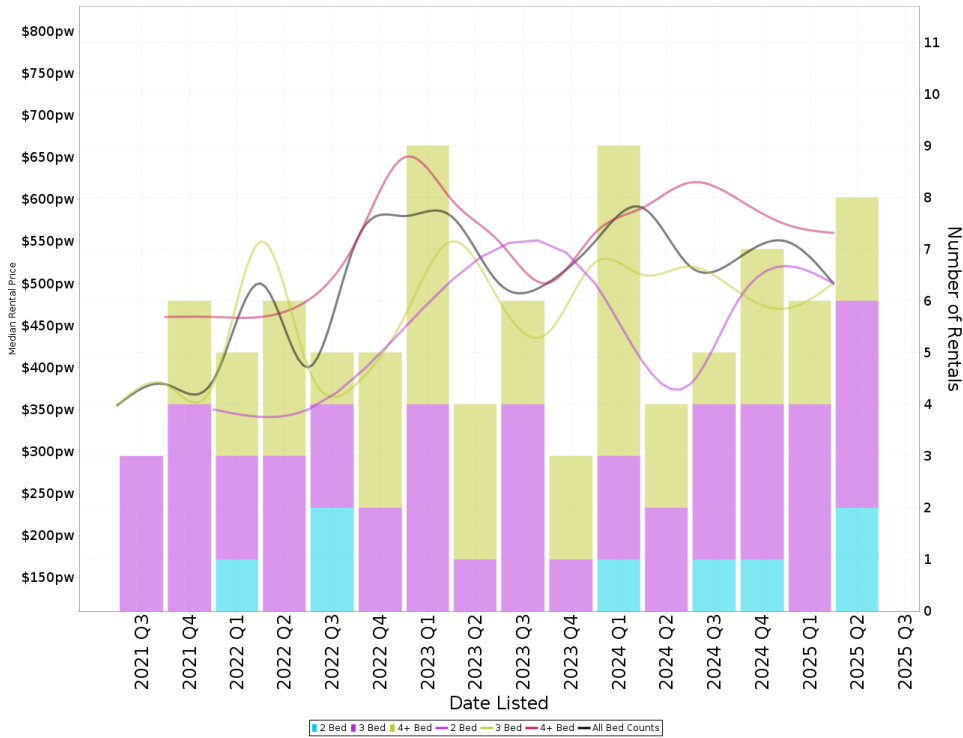
## BINNINGUP - Peak Selling Periods (3 years)



## BINNINGUP - Price Range Segments (12 months)



## Median Weekly Rents (Houses)



### Suburb Sale Price Growth

**-4.2%**

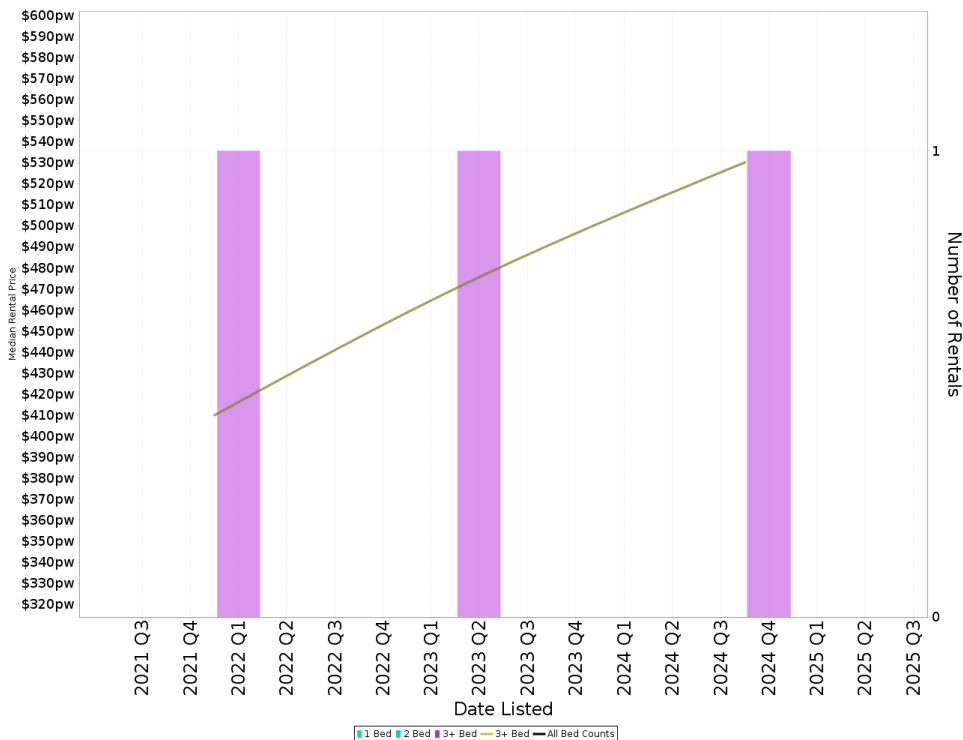
Current Median Price: \$575,000  
Previous Median Price: \$600,000  
Based on 70 registered House sales compared over the last two rolling 12 month periods.

### Suburb Rental Yield

**+4.8%**

Current Median Price: \$575,000  
Current Median Rent: \$530  
Based on 26 registered House rentals compared over the last 12 months.

## Median Weekly Rents (Units)



### Suburb Sale Price Growth

N/A

### Suburb Rental Yield

N/A